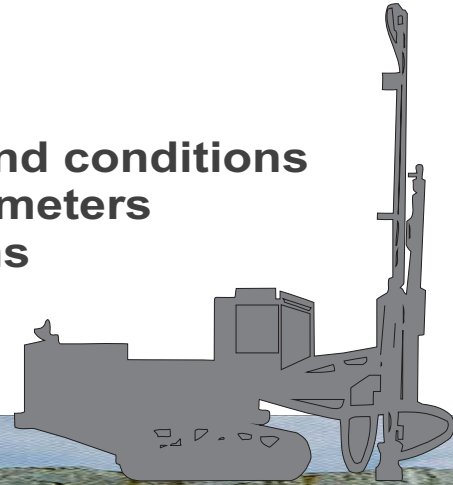


INKLINATOR[®]

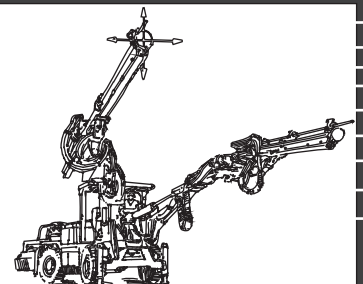
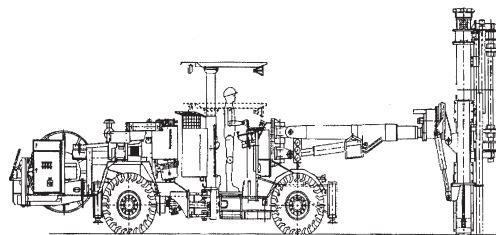
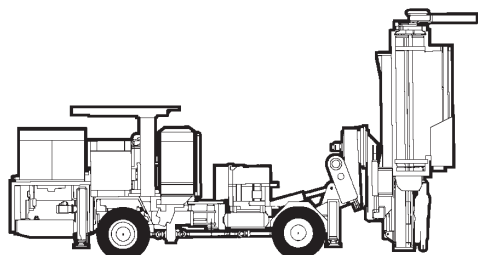
C an M odule S ystem

System for:

- Angle and length measurement
- Monitoring machine parameters and conditions
- Logging of drill and machine parameters
- For all types of drilling applications



Angles
Length
Alarms
Logging data



TRANSTRONIC

The **CMS Software** is made for Windows XP and combines the flexibility of PC-environment and the latest **CAN Open** technology. Suitable panel-PC size 8" or 12"

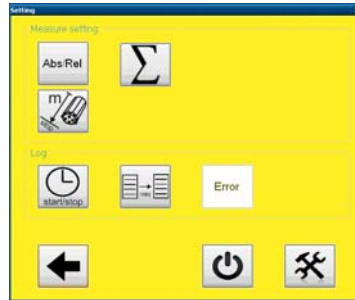
The software includes all functions for angle and length measurement on all types of drill rigs. Monitoring facilities of pressure and temperatures with operator adjustable alarm levels.

The system have a diagnostic function which makes it possible to check transducers and cables without any tools or instruments.

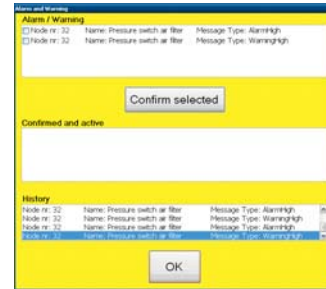
All sensors and cables are manufactured to work on drill rigs and other heavy machinery.



Main menu:
Drilling angles, hole length and ROP
Drill handling, alarm



Main menu 2:
Shortcuts to functions
Abs/Rel, total, length stop, copy start/stop shift, trouble shooting



Alarm/warning menu:
Alarm/warning list,
active/confirmed/history



Trouble shooting menu:
Transducer values, zero setting



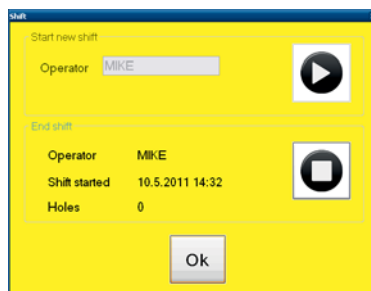
Configuration menu:
Activation of transducers
changing of direction,
setting of transducer types



Activation of alarms/warnings



Operator settings menu.



Shift start/stop menu:
Start and stop of shift logging



Shift report.

Supported hardware:

- 2 Axis angle transducer
- 1 Axis angle transducer
- 1 Axis angle transducer rotatable
- 1 Axis angle transducer
- Length transducer cylinder feeder
- Length transducer chain feeder
- Laser sensor
- Boom joint transducer
- Sight
- Temp sensor
- Pressure sensor
- Flow sensor

- 2x ± 60 Deg
- ± 60 Deg
- ± 60 Deg
- ± 60 Deg
- 360 Deg

- Accuracy All transducer better than
- Enclosure
- Working temperature
- Power Supply
- Interface

- + 0.3 Deg
- IP65, splash-proof
- 20 - +50 degrees Celsius
- 12-30 VDC
- CAN Open

